

EWS AISI410 | EWS A2

CONVEX HEAD SCREW



AESTHETIC PERFORMANCE AND ROBUSTNESS

Countersunk teardrop shaped head with curved surface for a pleasant look and firm grip with the bit. The increased shank diameter with high torsional strength for a strong, safe screwing even in high density woods.

EWS AISI410

The martensitic stainless steel version offers the highest mechanical performance. Suitable for outdoor applications and on acid wood, but away from corrosive agents (chlorides, sulphides, etc.).

EWS A2 | AISI305

The austenitic A2 stainless steel version offers higher corrosion resistance. Suitable for outdoor applications up to 1 km (0.62 mi) from the sea and on most of T4 class acid woods.



EWS AISI410



EWS A2 | AISI305



DIAMETER [in]

0.14 0.21 0.32

LENGTH [in]

13/16 115/16 3 1/8 12 5/8

MATERIAL

410
AISI

AISI410 martensitic stainless steel



C2

T4

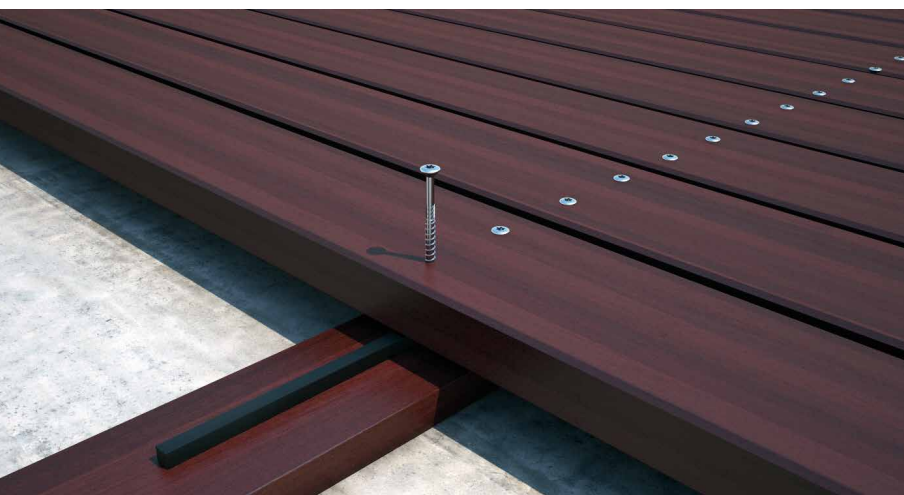
A2
AISI 305

A2 | AISI305 austenitic stainless steel (CRC II)



C4

T4



FIELDS OF USE

Outdoor use.
WPC boards (with pre-drill).

EWS AISI410: wooden boards with density of $< 880 \text{ kg/m}^3$ [$G = 1.05$] (without pre-drill).

EWS A2 | AISI305: wooden boards with density of $< 550 \text{ kg/m}^3$ [$G = 0.63$] (without pre-drill) and $< 880 \text{ kg/m}^3$ [$G = 1.05$] (with pre-drill).

Density values in accordance with ETA-11/0030.

CODES AND DIMENSIONS

EWS AISI410

410
AISI

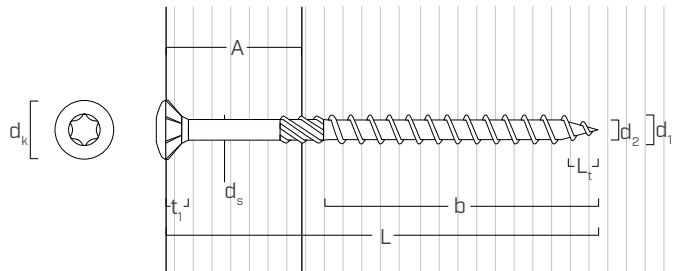
d ₁ [mm] [in]	CODE	L		b		A	pcs
		[mm]	[in]	[mm]	[in]	[in]	
5,3 0.21 #11 TX 25	EWS550	50	1 15/16	30	1 3/16	3/4	200
	EWS560	60	2 3/8	36	1 7/16	3/4	200
	EWS570	70	2 3/4	42	1 5/8	1	100
	EWS580	80	3 1/8	48	1 7/8	1 1/4	100

EWS A2 | AISI305

A2
AISI 305

d ₁ [mm] [in]	CODE	L		b		A	pcs
		[mm]	[in]	[mm]	[in]	[in]	
5,3	EWSA2550	50	1 15/16	30	1 3/16	3/4	200
0.21	EWSA2560	60	2 3/8	36	1 7/16	3/4	200
#11	EWSA2570	70	2 3/4	42	1 5/8	1	100
TX 25	EWSA2570	70	2 3/4	42	1 5/8	1	100

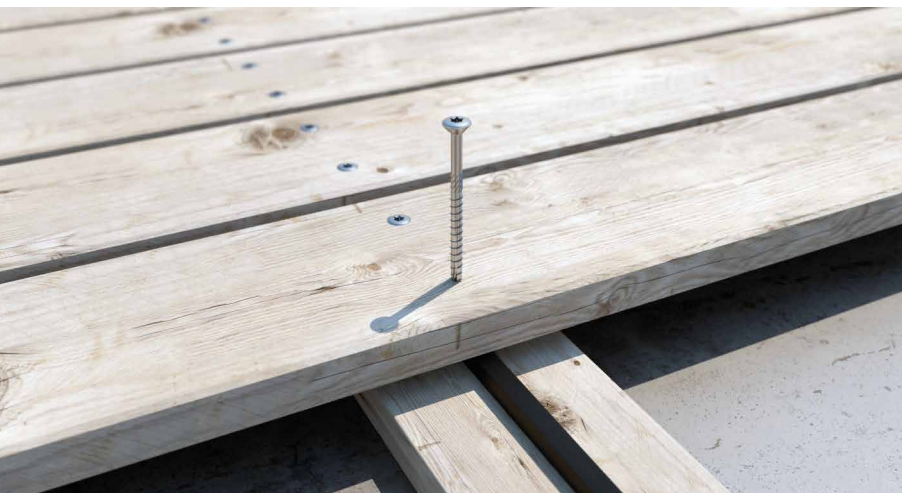
GEOMETRY



			EWS AISI410	EWS A2 AISI305
Nominal diameter	d ₁	[in] ⁽¹⁾	0.21	0.21
		[mm]	5,3	5,3
Outer thread diameter	d ₁	[in]	0.209	0.209
Head diameter	dk	[in]	0.315	0.315
Root diameter	d ₂	[in]	0.154	0.154
Shank diameter	ds	[in]	0.161	0.161
Head thickness	t ₁	[in]	0.144	0.144
Tip length	L _t	[in]	0.209	0.209
Pre-drilling hole diameter ⁽²⁾	d _v	[in]	9/64	9/64

⁽¹⁾The nominal diameter of the screw is converted into imperial units and rounded up to the nearest decimal point.

⁽²⁾For high density materials, pre-drilled holes are recommended based on the wood species.



WITHOUT PRE-DRILLED HOLE

EWS AISI410 can be used, without pre-drill, in woods having a maximum density of 880 kg/m³ [G = 1.05].

EWS A2 | AISI305 can be used, without pre-drill, in woods having a maximum density of 550 kg/m³ [G = 0.63].